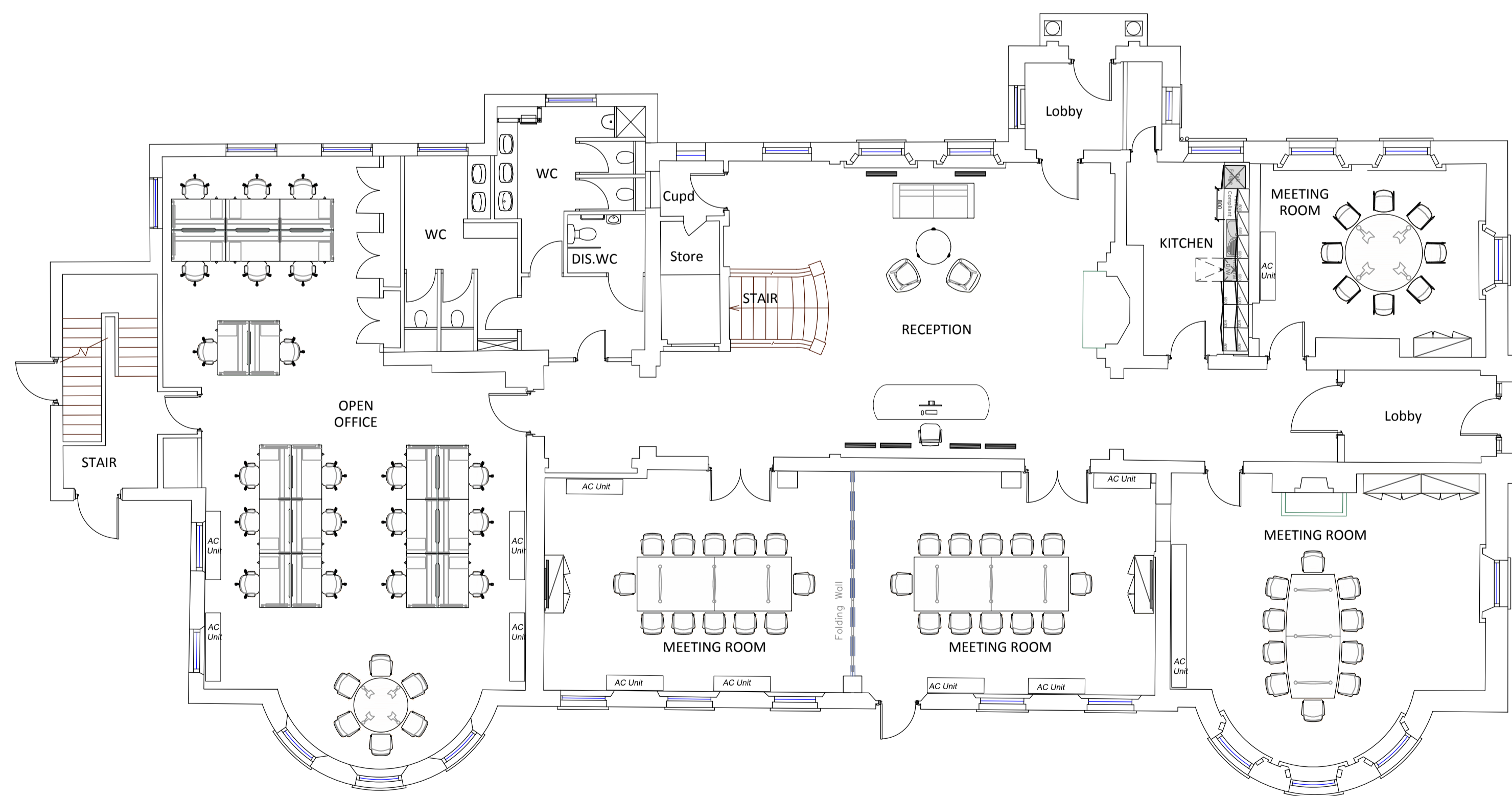


FIRST FLOOR
OPTION:1
SINGLE TENANT



GROUND FLOOR
OPTION:1
SINGLE TENANT

Partition Construction Legend

- Existing Door to remain
- New Single Leaf Door
- New Double Leaf Door
- New Leaf and a Half Door
- New Frameless Glass Door
- New Frameless Double Glass Door
- New Glass Door with Frame
- New Glass Double Door with Frame
- New Sliding Solid Door
- New Sliding Glass Door

Existing Partition to Remain

- New 75mm solid partition constructed from FFL to 1200mm from FFL, using one sheet of 12.5mm plasterboard either side of a 48mm galvanized steel stud with Rockwool infill.
- New 75mm solid partition constructed from FFL to suspended ceiling level, using one sheet of 12.5mm plasterboard either side of a 48mm galvanized steel stud with Rockwool infill.
- New 100mm solid partition constructed from FFL to suspended ceiling level, using two sheets of 12.5mm plasterboard either side of a 48mm galvanized steel stud with Rockwool infill. Rockwool and mesh cavity batten to be placed in ceiling void above for sound attenuation purposes.
- New 100mm solid partition constructed from FFL to suspended ceiling level, using two sheets of 12.5mm plasterboard either side of a 48mm galvanized steel stud with Rockwool infill.
- New 100mm solid partition constructed from slab to slab, using two sheets of 12.5mm plasterboard either side of a 48mm galvanized steel stud with Rockwool infill.
- New dry lining consisting of 2 sheets of plasterboard fixed to one side only of a 48mm galvanized steel stud with Rockwool infill.

Line Denotes Position of Py Strengthening Within Partition

- Partition with 30 minutes fire rated fire barrier within ceiling and floor voids.
- Partition with 60 minutes fire rated fire barrier within ceiling and floor voids.

Existing Glazing to Remain

- New full height, single glazed panel. Aluminium frame to specialist detail. Glass 6.4mm laminated. Manufacture to detail.
- New full height, double glazed panel. Aluminium frame to specialist detail. Glass 6.4mm laminated. Manufacture to detail.
- New frameless single glazed silicon jointed glass panel constructed from FFL to FCL with manufacture to detail.
- New frameless double glazed silicon jointed glass panel constructed from FFL to FCL with manufacture to detail.

Storage Wall Unit (Standard Depth)

- Storage Wall Unit - 600mm Deep
- Storage Wall Unit - 600mm Deep with Coat Rail and Hat Shelf

Room Label - Floor / Room No.

- Door Label - Floor / Door No.
- New door to have 1550x152 vision panel
- Door to be fitted with self closing device
- Door to be fitted with digital keypad lock
- Door to be fitted with electronic access control

N

THIS DRAWING IS PROTECTED UNDER COPYRIGHT. THIS DRAWING IS NOT TO BE REPRODUCED IN WHOLE OR PART UNLESS AUTHORISED BY area. COPYRIGHT © COPYRIGHT THIS DRAWING IS NOT TO BE SCALED. THE GENERAL CONTRACTOR IS TO CHECK ALL DIMENSIONS AND NOTIFY THE DESIGNERS OF ANY DISCREPANCIES OR OMISSIONS.

DRAWING TO BE READ IN CONJUNCTION WITH SCOPE OF WORKS

DATE	REV	REVISIONS	SIGN	CHKD

DATE	REV	REVISIONS	SIGN	CHKD

The Old Post Office
33 Station Road,
Egham,
Surrey TW20 9LA

5th Floor,
Counting House,
53 Tooley Street,
London SE1 2QN

T. 01784 274000 T. 020 7089 6000

info@areasq.co.uk www.areasq.co.uk

DRAWING STATUS
PRESENTATION DRAWING

CLIENT

PROJECT
Stoke Poges
Manor House
Sefton Park
Slough, SL2 4HD

TITLE
OPTION: 1 - Proposed Ground & First Floor General Arrangement Plans For Single Tenant

SCALE 1:100 @ A1

DATE	29/11/17	DRAWN	MC
		CHECKED	

PROJECT NO	BLDG.	FLOOR	DETAIL
			GA